

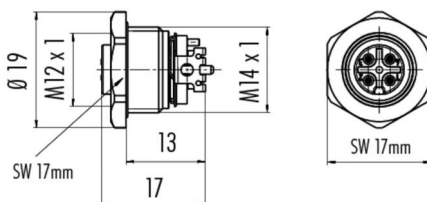
Product **female panel mount connector SMT, with housing, shieldable**

Area **M12-B Series 715/766**
Article number **99 4432 401 04**

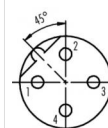
Illustration



Scale drawing



Contact Arrangement



	X	Y
1	-2,50	0,00
2	0,00	2,50
3	2,50	0,00
4	0,00	-2,50

- 1 braun/brown
- 2 weiß/white
- 3 blau/blue
- 4 schwarz/black

Technical data

General features

Termination SMT
Upper temperature -40 °C
Lower temperature 85 °C

Electrical parameters

Rated impulse voltage 2500 V
Pollution degree 3
Overvoltage category II
Material group III
EMV compliance shieldable
Degree of protection IP67
Mechanical operation > 100 Mating cycles