

Product	Contacts 8, female panel mount connector M16, with shielded PUR cable	Area	M12-A Series 713/763
Pole	8	Article number	70 3482 785 08

Illustration	Scale drawing	Contact Arrangement																				
		<table border="0"> <thead> <tr> <th style="text-align: left;">geschirmt/ shielded</th> <th style="text-align: left;">nicht geschirmt/ not shielded</th> </tr> </thead> <tbody> <tr> <td>1 weiß/white</td> <td>1 weiß/white</td> </tr> <tr> <td>2 braun/brown</td> <td>2 braun/brown</td> </tr> <tr> <td>3 grün/green</td> <td>3 grün/green</td> </tr> <tr> <td>4 gelb/yellow</td> <td>4 gelb/yellow</td> </tr> <tr> <td>5 grau/grey</td> <td>5 grau/grey</td> </tr> <tr> <td>6 rosa/pink</td> <td>6 rosa/pink</td> </tr> <tr> <td>7 blau/blue</td> <td>7 blau/blue</td> </tr> <tr> <td>8 rot/red</td> <td>8 Schirm/shield</td> </tr> <tr> <td colspan="2">Gehäuse-Schirm/ Housing-shield</td> </tr> </tbody> </table> <div style="text-align: center; margin-top: 10px;"> </div>	geschirmt/ shielded	nicht geschirmt/ not shielded	1 weiß/white	1 weiß/white	2 braun/brown	2 braun/brown	3 grün/green	3 grün/green	4 gelb/yellow	4 gelb/yellow	5 grau/grey	5 grau/grey	6 rosa/pink	6 rosa/pink	7 blau/blue	7 blau/blue	8 rot/red	8 Schirm/shield	Gehäuse-Schirm/ Housing-shield	
geschirmt/ shielded	nicht geschirmt/ not shielded																					
1 weiß/white	1 weiß/white																					
2 braun/brown	2 braun/brown																					
3 grün/green	3 grün/green																					
4 gelb/yellow	4 gelb/yellow																					
5 grau/grey	5 grau/grey																					
6 rosa/pink	6 rosa/pink																					
7 blau/blue	7 blau/blue																					
8 rot/red	8 Schirm/shield																					
Gehäuse-Schirm/ Housing-shield																						

You can find the assembly instruction on the next page.

Technical data

<h3 style="color: #0070C0; margin: 0;">Common values</h3> <p>Connector Design Female panel mount connector Connector locking system screw Termination PUR cable Wire gauge (mm) 0.25 mm² Wire gauge (AWG) 24 Upper temperature 70 °C Lower temperature -5 °C</p>	<h3 style="color: #0070C0; margin: 0;">Electrical values</h3> <p>Rated voltage 60 V Rated impulse voltage 800 V Pollution degree 3 Overvoltage category II Material group II Rated current (40°C) 2 A Volume resistivity ≤ 3 mΩ EMV compliance shielded Degree of protection IP68 Mechanical operation > 100 mating cycles</p>	
<h3 style="color: #0070C0; margin: 0;">Cable data</h3> <p>Cable diameter 6</p>	<h3 style="color: #0070C0; margin: 0;">Material</h3> <p>Material of contact CuZn (Brass) Contact plating Au (Gold) Material of contact body PA Material of housing Brass, nickel-plated zinc die casting</p>	

Contacts 8, female panel mount connector fixing thread M16 x 1,5, with shielded PUR cable,

Product
Pole

Contacts 8, female panel mount connector
M16, with shielded PUR cable
8

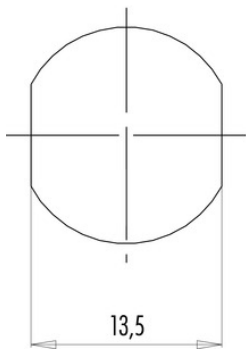
Area
Article number

M12-A Series 713/763
70 3482 785 08

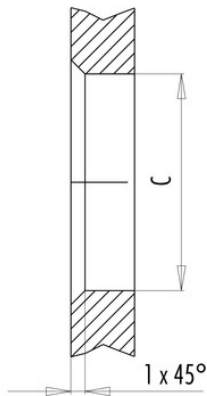
Installation instructions / Mounting cutout

Mit Fläche als Verdrehschutz
With flats as anti-rotation device

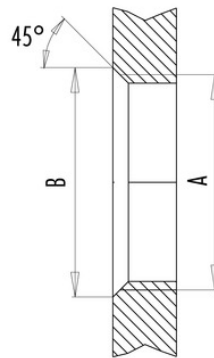
PG 9/M16 x 1,5



Mit Durchgangsbohrung
With bore hole



Mit Gewinde, einschraubbar
With thread to screw in



alternativ/alternativ

	A	B	C
PG 9	PG 9	16,2	15,3
PG 13,5	PG 13,5	21,5	20,5
M16x1,5	M16x1,5	17,0	16,1
M20x1,5	M20x1,5	21,0	20,1

Anzugsdrehmoment/Tightening moment

Metallgehäuse/Metal housing 6,25 Nm
Kunststoffgehäuse/Plastic housing 3,75 Nm