

Product  
Pole

**Contacts: 4, Female cable connector, overmoulded, M5 x 0.5**  
4

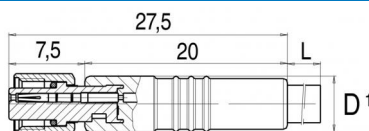
Area  
Article number

**M5 Series 707**  
**79 3108 32 04**

### Illustration

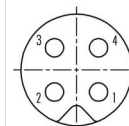


### Scale drawing



<sup>1)</sup>D = 6 mm, Typen 3 und 4 x 0,14 mm<sup>2</sup>; 3 x 0  
D = 6,5 mm, Typ 4 x 0,25 mm<sup>2</sup>

### Contact Arrangement



	X	Y
1	0,63	-0,63
2	-0,63	-0,63
3	-0,63	0,63
4	0,63	0,63

- 1 braun/brown
- 2 weiß/white
- 3 blau/blue
- 4 schwarz/black

## Technical data

### Common values

Connector Design	Female cable connector
Connector locking system	screw
Termination	crimp, injection-moulded cable
Wire gauge (mm)	0,25 mm <sup>2</sup>
Wire gauge (AWG)	24
Cable outlet	-
Upper temperature	80 °C
Lower temperature	-25 °C

### Cable data

material housing	PUR
Insulation single lead	PVC
Single lead structure	32 x 0.1
Cable sheath Ø	4
Conductor resistance	148Ω/Km
Temperature range cable movable c from	-5
Temperature range cable movable c to	80
Temperature range cable fixed c from	-25
Temperature range cable fixed c to	80

### Electrical values

Rated voltage	60 V
Rated impulse voltage	800 V
Pollution degree	3
Overvoltage category	II
Material group	I
Rated current (40°C)	1 A
Volume resistivity	≤ 3 mΩ
EMV compliance	not shielded
Degree of protection	IP67
Mechanical operation	> 100 mating cycles

### Material

Material of contact	CuSn (Bronze)
Contact plating	Au (Gold)
Material of contact body	PUR
Material of housing	PUR

Contacts 4: Cable length: 2, Cable: 4 x 0.25 mm<sup>2</sup> PUR, female cable connector, overmoulded, M5 x 0.5