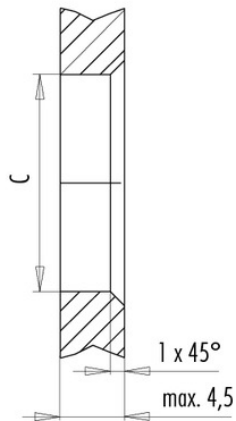
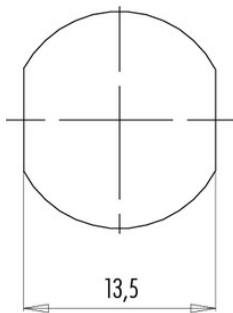


Product **Contacts: 4, Female panel mount connector, screwed from front, dip-solder with shielding sheet**
 Area **M12-A Series 713/763**
 Article number **86 0532 1120 00004**

Installation instructions / Mounting cutout

Mit Fläche als Verdrehschutz
With flats as anti-rotation device

Mit Durchgangsbohrung
With bore hole



	C
PG 9	15,3
M16x1,5	16,1

Anzugsdrehmoment/Tightening moment

Metallgehäuse/Metal housing 6,25 Nm
 Kunststoffgehäuse/Plastic housing 3,75 Nm

Installation instructions / Mounting cutout

