

# CQ series

## Main features

**New CQ4 inserts ensure a 40A current in the same size of the standard 21.21 inserts** (normally 10A/16A).

They can be used with crimp contacts with a conductor **cross-section up to 10 mm<sup>2</sup>**.

The new CQ4 series is completed by the new **MKA enclosures with M25 thread size**.

### Inserts series: CQ4

- › for wires: up to 10 mm<sup>2</sup> (AWG 8);
- › finger safe male and female contacts.



Inserts series		CQ4
No. of poles	main contact	3 + ⊕
rated current <sup>1)</sup>		40A
EN 61984 pollution degree 3	rated voltage	400V
	rated impulse withstand voltage	6kV
	pollution degree	3
contact resistance		≤ 0,3 mΩ
insulation resistance		≥ 10 GΩ
ambient temperature limit (°C)	min	-40 °C
	max	+125 °C
degree of protection	with enclosures (according to version)	IP65, IP66, IP67, IP68, IP69K
	without enclosures	IP20
conductor connections		crimp
conductor cross-section	mm <sup>2</sup>	1,5 ..... 10
	AWG	16 - 8
stripping length	mm	9 - 15
mechanical endurance (rating cycles)		≥ 500

enclosures:  
size "21.21"

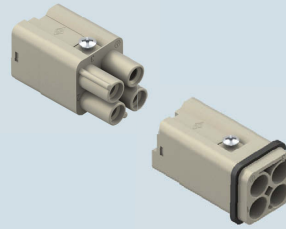
page:

metallic type ..... 223 - 225  
**W-TYPE for aggressive environments** ..... 369  
 EMC ..... 387  
 IP68 ..... 416 - 418

refer to catalogue page CN.16

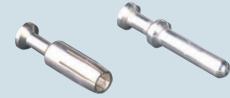
- cannot be used in angled enclosures (IA/IAP/VA version)

**inserts,  
crimp connections**



**NEW**

**40A crimp contacts  
silver and gold plated**



description

part No.

part No.

without contacts (to be ordered separately)  
 female inserts for female contacts  
 male inserts for male contacts

**CQ4F 03 \***  
**CQ4M 03 \***

**40A female crimp contacts**

1,5 mm <sup>2</sup>	AWG 16
2,5 mm <sup>2</sup>	AWG 14
4 mm <sup>2</sup>	AWG 12
6 mm <sup>2</sup>	AWG 10
10 mm <sup>2</sup>	AWG 8

**40A male crimp contacts**

1,5 mm <sup>2</sup>	AWG 16
2,5 mm <sup>2</sup>	AWG 14
4 mm <sup>2</sup>	AWG 12
6 mm <sup>2</sup>	AWG 10
10 mm <sup>2</sup>	AWG 8

**CXFA 1.5**  
**CXFA 2.5**  
**CXFA 4.0**  
**CXFA 6.0**  
**CXFA 10**

**CXMA 1.5**  
**CXMA 2.5**  
**CXMA 4.0**  
**CXMA 6.0**  
**CXMA 10**

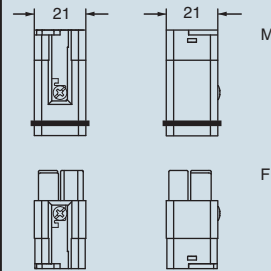
silver plated

- characteristics according to EN 61984:

- 40A 400V 6kV 3**
- insulation resistance:  $\geq 10 \text{ G}\Omega$
- ambient temperature limit:  $-40 \text{ }^\circ\text{C} \dots +125 \text{ }^\circ\text{C}$
- are made of self-extinguishing thermoplastic resin UL 94 V0
- mechanical life:  $\geq 500$  cycles
- contact resistance:  $\leq 0,3 \text{ m}\Omega$
- male and female contacts to test of contact with fingers
- for contact crimping instructions, please see the crimping tool section (40A contacts CXF, CXM series) on pages 534, 536, 538, 544, 546, 548 catalogue CN.16

\* cable diameter: up to 7,5 mm  
 contact section: up to 10 mm<sup>2</sup>

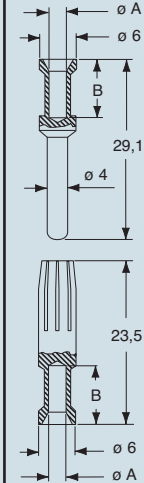
dimensions in mm



contacts side (front view)



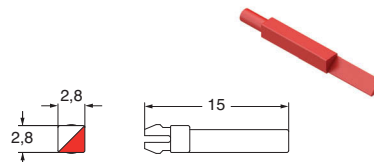
dimensions in mm



- it is **guarantee maximum safety even in case of accidental contact with fingers (IPXXB or IP2X)**. Safety is guaranteed as standard on female contacts, **but also on male contacts**. This feature is important as it ensures full compliance with the recent safety standard **EN 60204-1**, concerning electric equipment fitted on machines and in particular with the requirements of Article 6.2.4 concerning protection against residual voltage.

*In the case of plugs or similar devices, the with drawal of which results in the exposure of conductors (for example pins), the discharge time shall not exceed 1 s, otherwise such conductors shall be protected against direct contact to at least an IP2X or IPXXB.*

**coding pins CR Q03 (4 possible positions)**



**CXF and CXM contacts**

conductor section mm <sup>2</sup>	conductor slot $\varnothing A$ (mm)	conductors stripping length B (mm)
1,5	1,8	9
2,5	2,2	9
4	2,85	9,6
6	3,5	9,6
10	4,3	15

dimensions shown are not binding  
 and may be changed without notice