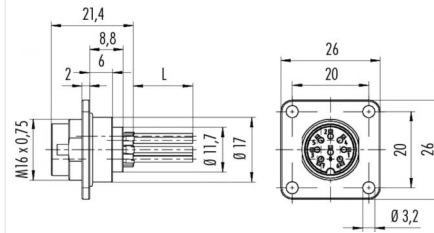


Product **Contacts: 6 DIN, Male panel mount connector, rectangular flange, with single wires**
 Area **M16 IP67 Series 423/ 723/ 425**
 Article number **09 0123 320 06**

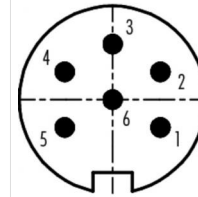
Illustration



Scale drawing



Contact Arrangement



	X	Y
1	3,03	-1,75
2	3,03	1,75
3	0,00	3,50
4	-3,03	1,75
5	-3,03	-1,75
6	0,00	0,00

You can find the assembly instruction on the next page.

Technical data

General features

Connector Design	male panel mount connector
Connector locking system	bolted
Termination	Strands
Wire gauge (mm)	0,75 mm ²
Wire gauge (AWG)	22
Upper temperature	85 °C
Lower temperature	-30 °C

Electrical parameters

Rated voltage	300 V
Rated impulse voltage	1500 V
Pollution degree	1
Overvoltage category	I
Material group	II
Rated current (40°C)	5 A
Volume resistivity	≤ 5 mΩ
Degree of protection	IP67
Mechanical operation	> 500 Mating cycles

Material

Material of contact	CuSn (Bronze)
Contact plating	Ag (silver)
Material of contact body	PBT (UL 94 V-0)

Product	Contacts: 6 DIN, Male panel mount connector, rectangular flange, with single wires
Area	M16 IP67 Series 423/ 723/ 425
Article number	09 0123 320 06

Installation instructions / Mounting cutout

