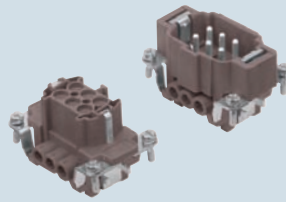


enclosures:  
 size "44.27" page:  
 for 180 °C ..... 398

**inserts,  
 screw terminal connections**



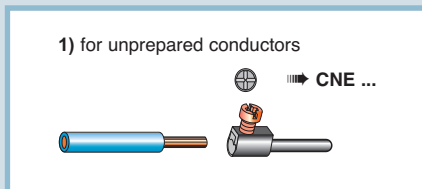
silver  
 plated  
 contacts

description

part No.

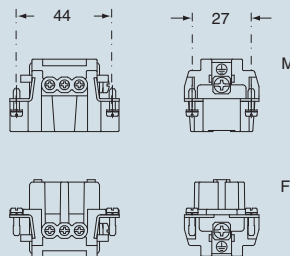
indirect, with plate 1), use in up to 180 °C  
 female inserts with female contacts, brown  
 male inserts with male contacts, brown

**CNEF 06 RY**  
**CNEM 06 RY**

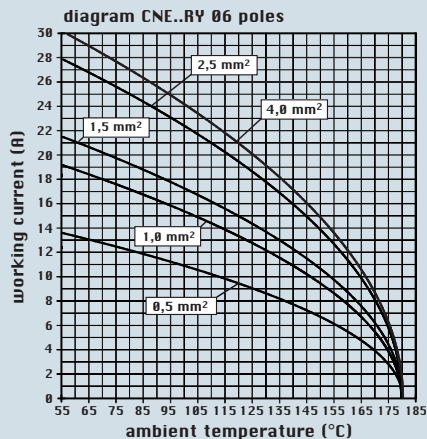
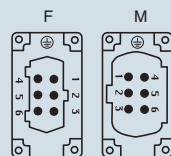


- characteristics according to EN 61984:  
**16A 500V 6kV 3**  
**16A 400/690V 6kV 2**
- cUL - UL for USA and Canada, CSA, CCC \*, GL, EAC certified; \* CQC certification being applied for
- rated voltage according to UL/CSA: 600V
- insulation resistance:  $\geq 10 \text{ G}\Omega$
- ambient temperature limit: -40 °C ... +180 °C
- are made of self-extinguishing thermoplastic resin UL 94 V0
- mechanical life:  $\geq 250$  cycles
- contact resistance:  $\leq 1 \text{ m}\Omega$
- for maximum current load, see the following load curves inserts, for more information see page 560

dimensions in mm



contacts side (front view)

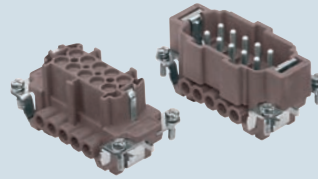


- inserts with plate for section conductors:  
 0,5 - 4 mm<sup>2</sup> - AWG 20 - 12
- conductors stripping length: 7 mm
- terminal screw torque: 0,5 Nm (4,4 lb.in), for more information see page 34 and 35

dimensions shown are not binding  
 and may be changed without notice

enclosures:  
 size "57.27" page:  
 for 180 °C ..... 399

**inserts,  
 screw terminal connections**



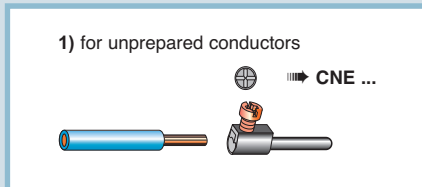
silver  
 plated  
 contacts

description

part No.

indirect, with plate 1), use in up to 180 °C  
 female inserts with female contacts, brown  
 male inserts with male contacts, brown

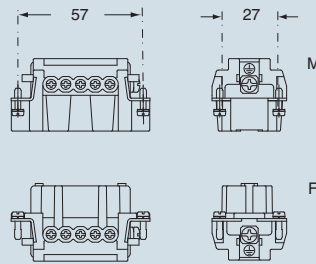
**CNEF 10 RY**  
**CNEM 10 RY**



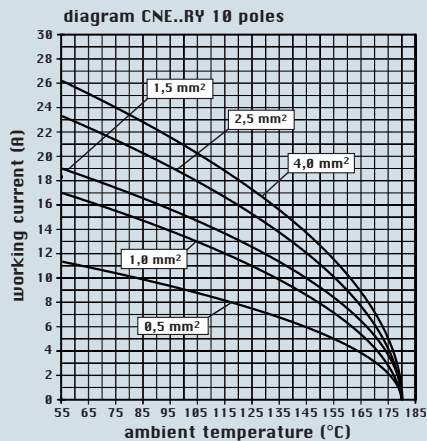
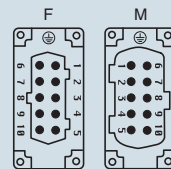
- characteristics according to EN 61984:

- 16A 500V 6kV 3**
- 16A 400/690V 6kV 2**
- cUL - UL for USA and Canada, CSA, CCC \*, GL, EAC certified; \* CQC certification being applied for
- rated voltage according to UL/CSA: 600V
- insulation resistance:  $\geq 10 \text{ G}\Omega$
- ambient temperature limit: -40 °C ... +180 °C
- are made of self-extinguishing thermoplastic resin UL 94 V0
- mechanical life:  $\geq 250$  cycles
- contact resistance:  $\leq 1 \text{ m}\Omega$
- for maximum current load, see the following load curves inserts, for more information see page 560

dimensions in mm



contacts side (front view)

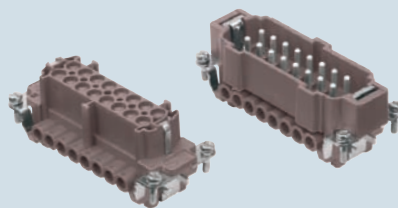


- inserts with plate for section conductors:  
 0,5 - 4 mm<sup>2</sup> - AWG 20 - 12
- conductors stripping length: 7 mm
- terminal screw torque: 0,5 Nm (4,4 lb.in), for more information see page 34 and 35

dimensions shown are not binding  
 and may be changed without notice

enclosures:  
 size "77.27" page:  
 for 180 °C ..... 400

**inserts,  
 screw terminal connections**



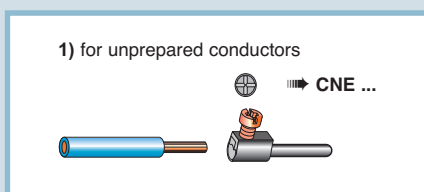
silver plated contacts

description

part No.

indirect, with plate 1), use in up to 180 °C  
 female inserts with female contacts, brown  
 male inserts with male contacts, brown

**CNEF 16 RY**  
**CNEM 16 RY**



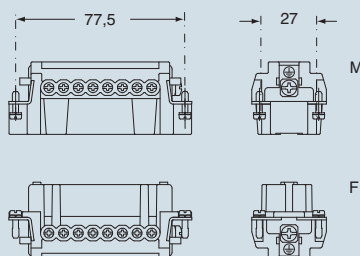
- characteristics according to EN 61984:

**16A 500V 6kV 3**

**16A 400/690V 6kV 2**

- cUL - UL for USA and Canada, CSA, CCC \*, GL, EAC certified; \* CQC certification being applied for
- rated voltage according to UL/CSA: 600V
- insulation resistance:  $\geq 10 \text{ G}\Omega$
- ambient temperature limit: -40 °C ... +180 °C
- are made of self-extinguishing thermoplastic resin UL 94 V0
- mechanical life:  $\geq 250$  cycles
- contact resistance:  $\leq 1 \text{ m}\Omega$
- for maximum current load, see the following load curves inserts, for more information see page 560

dimensions in mm



contacts side (front view)

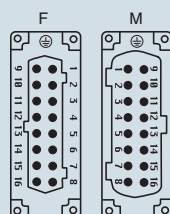
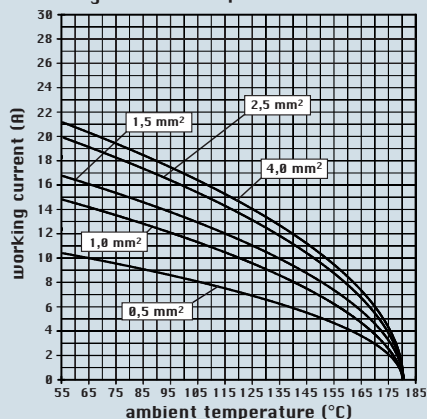


diagram CNE..RY 16 poles

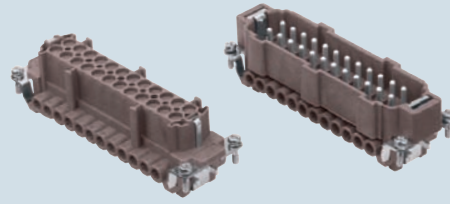


- inserts with plate for section conductors:  
 0,5 - 4 mm<sup>2</sup> - AWG 20 - 12
- conductors stripping length: 7 mm
- terminal screw torque: 0,5 Nm (4,4 lb.in), for more information see page 34 and 35

dimensions shown are not binding  
 and may be changed without notice

enclosures:  
 size "104.27" page:  
 for 180 °C ..... 401

inserts,  
 screw terminal connections



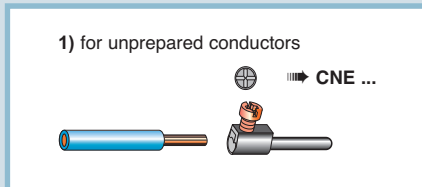
silver  
 plated  
 contacts

description

part No.

indirect, with plate 1), use in up to 180 °C  
 female inserts with female contacts, brown  
 male inserts with male contacts, brown

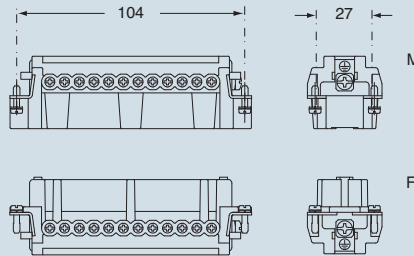
CNEF 24 RY  
 CNEM 24 RY



- characteristics according to EN 61984:

- 16A 500V 6kV 3**
- 16A 400/690V 6kV 2**
- cUL - UL for USA and Canada, CSA, CCC \*, GL, EAC certified; \* CQC certification being applied for
- rated voltage according to UL/CSA: 600V
- insulation resistance:  $\geq 10 \text{ G}\Omega$
- ambient temperature limit: -40 °C ... +180 °C
- are made of self-extinguishing thermoplastic resin UL 94 V0
- mechanical life:  $\geq 250$  cycles
- contact resistance:  $\leq 1 \text{ m}\Omega$
- for maximum current load, see the following load curves inserts, for more information see page 560

dimensions in mm



contacts side (front view)

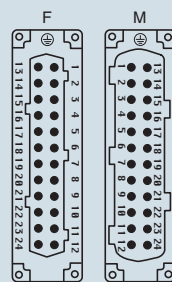
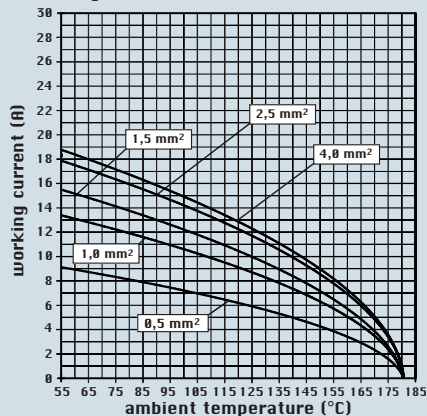


diagram CNE..RY 24 poles

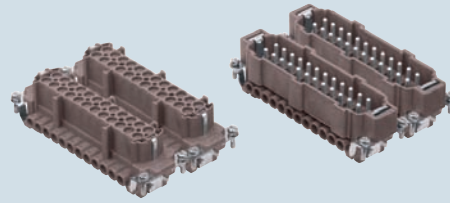


- inserts with plate for section conductors:  
 0,5 - 4 mm<sup>2</sup> - AWG 20 - 12
- conductors stripping length: 7 mm
- terminal screw torque: 0,5 Nm (4,4 lb.in), for more information see page 34 and 35

dimensions shown are not binding  
 and may be changed without notice

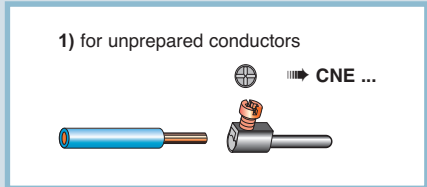
enclosures:  
 size "104.62" page:  
 for 180 °C ..... 402

**inserts,  
 screw terminal connections**



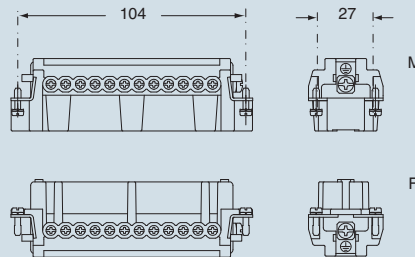
silver plated contacts

description	part No.	part No.
indirect, with plate 1), use in temperatures up to 180 °C female inserts, No.(1-24) and (25-48), brown male inserts, No. (1-24) and (25-48), brown	<b>CNEF 24 RY CNEM 24 RY</b>	<b>CNEF 24 RYN CNEM 24 RYN</b>

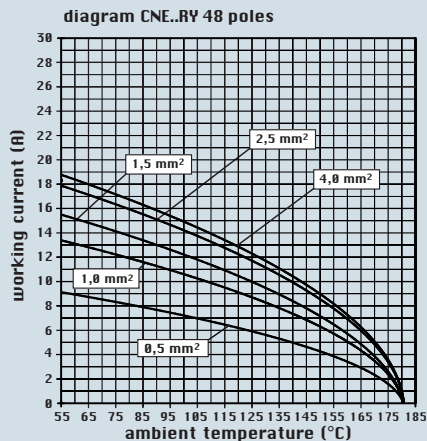
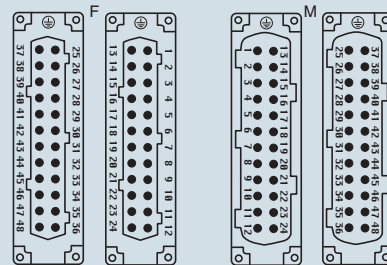


- characteristics according to EN 61984:  
**16A 500V 6kV 3**  
**16A 400/690V 6kV 2**
- cUL - UL for USA and Canada, CSA, CCC \*, GL, EAC certified; \* CQC certification being applied for
- rated voltage according to UL/CSA: 600V
- insulation resistance:  $\geq 10 \text{ G}\Omega$
- ambient temperature limit: -40 °C ... +180 °C
- are made of self-extinguishing thermoplastic resin UL 94 V0
- mechanical life:  $\geq 250$  cycles
- contact resistance:  $\leq 1 \text{ m}\Omega$
- for maximum current load, see the following load curves inserts, for more information see page 560

dimensions in mm



contacts side (front view)



- inserts with plate for section conductors:  
 0,5 - 4 mm<sup>2</sup> - AWG 20 - 12
- conductors stripping length: 7 mm
- terminal screw torque: 0,5 Nm (4,4 lb.in), for more information see page 34 and 35

dimensions shown are not binding  
 and may be changed without notice