



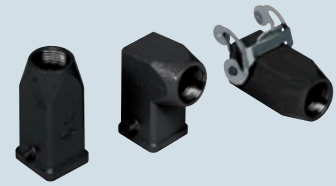
inserts:	page:
CK 3 poles + ⊕	48
CK 4 poles + ⊕	48
CKS 3 poles + ⊕	49
CKS 4 poles + ⊕	49
CD 8 poles	54
CQ 12 poles + ⊕	165
CQ 5 poles + ⊕	166

insert dimensions:
21 x 21 mm

**bulkhead mounting housings
straight and angled**

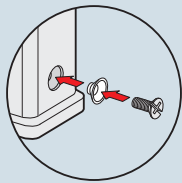


hoods

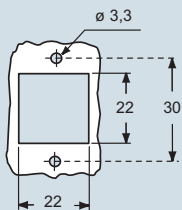


description	part No. (entry - Pg 11)	part No. (entry - M 20)	part No. (entry - Pg 11)	part No. (entry - M 20)
with stainless steel lever without cable gland, stainless steel lever without cable gland, stainless steel lever	CKAXW 03 I CKAXW 03 IA CKAXW 03 IAP CKAXW 03 AP	MKAXW IAP20 MKAXW AP20		
with pegs, top entry with pegs, side entry			CKAW 03 V CKAW 03 VA	MKAW V20 MKAW VA20
with stainless steel lever, top entry			CKAXW 03 VG	MKAXW VG20
gasket and screw kit for IP66/IP67 ¹⁾ for CK, CQ 05, CKS inserts	CKR 65		CKR 65	
gasket and screw kit for IP66/IP67 ¹⁾ for CD 08 inserts	CKR 65 D		CKR 65 D	

1) To obtain the protection rating IP66/IP67 a kit is provided that includes a gasket to fit under the insert fixing screws supplied with the kit (see illustrative example).
CQ 12 inserts are already supplied with a gasket and screw which ensure IP66/IP67 protection rating.

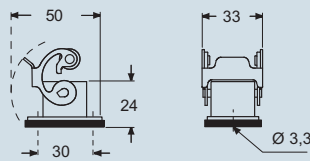


panel cut-out for bulkhead mounting housings in mm

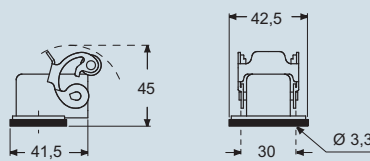


dimensions in mm

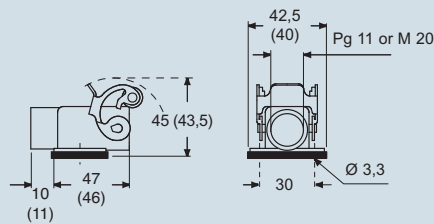
CKAXW I



CKAXW IA

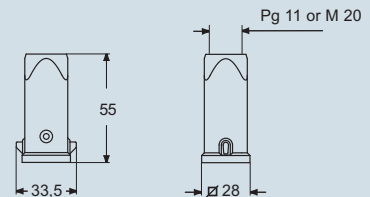


**CKAXW IAP (CKAXW AP) and
MKAXW IAP (MKAXW AP)**

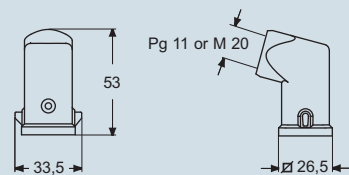


dimensions in mm

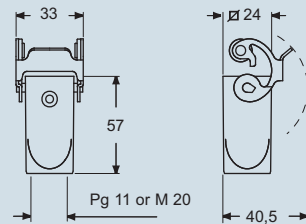
CKAW V and MKAW V



CKAW VA and MKAW VA



CKAXW VG and MKAXW VG



ILME®
Type 12
Type 4/4X only
with CKR 65 (D)



IP66/IP67 with CKR 65 (D) ¹⁾
IP69K (compliant with DIN 40050-9)

dimensions shown are not binding
and may be changed without notice