

Product	Contacts: 2, Male panel mount connectors M16, with PROFIBUS cable, cable length 0.5 m	Area	M12-B Series 715/766
Pole	2	Article number	70 4433 246 04

Illustration	Scale drawing	Contact Arrangement
	<p>1 n. C. 2 grün/gree 3 n. C. 4 rot/red</p>	<p>1 n. C. 2 grün/green 3 n. C. 4 rot/red</p>

You can find the assembly instruction on the next page.

Technical data

Common values

Connector Design	Male panel mount connector
Connector locking system	screw
Termination	Kabel
Wire gauge (mm)	0.25 mm ²
Wire gauge (AWG)	24
Upper temperature	60 °C
Lower temperature	-20 °C

Cable data

material housing	-
Insulation single lead	-
Single lead structure	-
Conductor resistance	-
Bending radius cable fixed	-
Bending radius cable movable	-

Electrical values

Rated voltage	250 V
Rated impulse voltage	2500 V
Pollution degree	3
Overvoltage category	II
Material group	II
Rated current (40°C)	4 A
Volume resistivity	≤ 3 mΩ
EMV compliance	shielded
Degree of protection	IP68
Mechanical operation	> 100 mating cycles

Material

Material of contact	CuZn (Brass)
Contact plating	Au (Gold)
Material of contact body	PA
Material of housing	Brass, nickel-plated zinc die casting

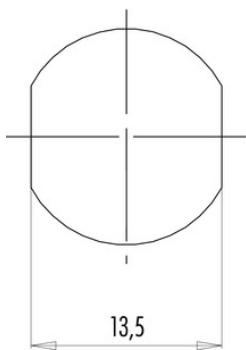
Cable length: 0.5 m, fixing thread: M16 x 1.5, Contacts: 2, Male panel mount connector M16, with PROFIBUS cable, shielded

Product	Contacts: 2, Male panel mount connectors M16, with PROFIBUS cable, cable length 0.5 m	Area	M12-B Series 715/766
Pole	2	Article number	70 4433 246 04

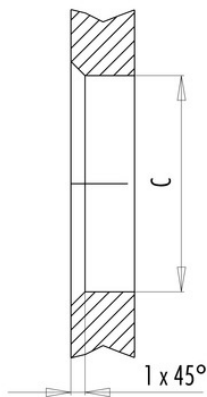
Installation instructions / Mounting cutout

Mit Fläche als Verdrehschutz
With flats as anti-rotation device

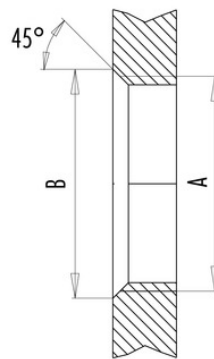
PG 9/M16 x 1,5



Mit Durchgangsbohrung
With bore hole



Mit Gewinde, einschraubbar
With thread to screw in



alternativ/alternativ

	A	B	C
PG 9	PG 9	16,2	15,3
PG 13,5	PG 13,5	21,5	20,5
M16x1,5	M16x1,5	17,0	16,1
M20x1,5	M20x1,5	21,0	20,1

Anzugsdrehmoment/Tightening moment

Metallgehäuse/Metal housing 6,25 Nm
Kunststoffgehäuse/Plastic housing 3,75 Nm