

Product	Contacts: 5, Male panel mount connector with single wires, 0.25 mm², PG 9, M16 x 1.5, PG 9VA, M16 x 1.5 VA	Area	M12-A Series 713/763
Pole	5	Article number	09 3441 700 05

Illustration	Scale drawing	Contact Arrangement										
	<p>Ausführung mit Zink Druckgussgehäuse Version with zinc diecasted housing</p> <p>VA-Ausführung Stainless steel version</p>	<table border="0" style="margin-left: auto; margin-right: auto;"> <tr> <td style="padding-right: 10px;">1</td> <td>braun/brown</td> </tr> <tr> <td style="padding-right: 10px;">2</td> <td>weiß/white</td> </tr> <tr> <td style="padding-right: 10px;">3</td> <td>blau/blue</td> </tr> <tr> <td style="padding-right: 10px;">4</td> <td>schwarz/black</td> </tr> <tr> <td style="padding-right: 10px;">5</td> <td>grau/grey</td> </tr> </table>	1	braun/brown	2	weiß/white	3	blau/blue	4	schwarz/black	5	grau/grey
1	braun/brown											
2	weiß/white											
3	blau/blue											
4	schwarz/black											
5	grau/grey											

You can find the assembly instruction on the next page.

Technical data

Common values

Connector Design	Male panel mount connector
Connector locking system	screw
Termination	Single wires
Wire gauge (mm)	0.25 mm ²
Wire gauge (AWG)	24
Upper temperature	85 °C
Lower temperature	-40 °C

Electrical values

Rated voltage	125 V
Rated impulse voltage	1500 V
Pollution degree	3
Overvoltage category	II
Material group	II
Rated current (40°C)	4 A
Volume resistivity	≤ 3 mΩ
EMV compliance	not shielded
Degree of protection	IP68
Mechanical operation	> 100 mating cycles

Material

Material of contact	CuZn (Brass)
Contact plating	Au (Gold)
Material of contact body	PA
Material of housing	Nickel-plated zinc die casting

Contacts: 5, Male panel mount connector with single wires, 0.25 mm², M16 x 1.5, with UL approval

Product

Contacts: 5, Male panel mount connector with single wires, 0.25 mm², PG 9, M16 x 1.5, PG 9VA, M16 x 1.5 VA

Area
Article number

**M12-A Series 713/763
09 3441 700 05**

Pole

5

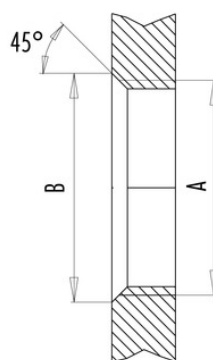
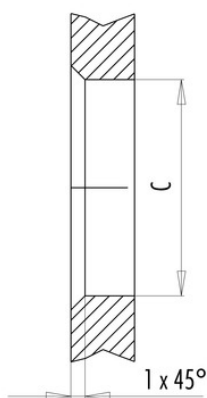
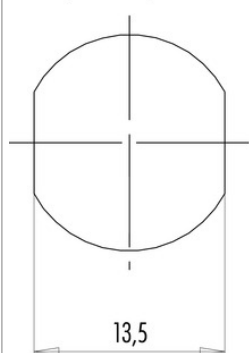
Installation instructions / Mounting cutout

Mit Fläche als Verdrehschutz
With flats as anti-rotation device

Mit Durchgangsbohrung
With bore hole

Mit Gewinde, einschraubbar
With thread to screw in

PG 9/M16 x 1,5



alternativ/alternativ

	A	B	C
PG 9	PG 9	16,2	15,3
PG 13,5	PG 13,5	21,5	20,5
M16x1,5	M16x1,5	17,0	16,1
M20x1,5	M20x1,5	21,0	20,1

Anzugsdrehmoment/Tightening moment

Metallgehäuse/Metal housing 6,25 Nm
Kunststoffgehäuse/Plastic housing 3,75 Nm