

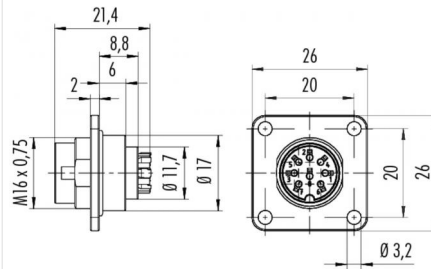
Product **Contacts: 8 DIN, Male panel mount connector, rectangular flange, crimp**

Area **M16 IP67 Series 423/ 723/ 425**
Article number **09 0173 370 08**

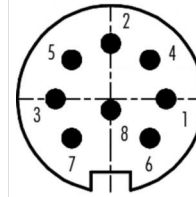
Illustration



Scale drawing



Contact Arrangement



	X	Y
1	3,50	0,00
2	0,00	3,50
3	-3,50	0,00
4	2,47	2,47
5	-2,47	2,47
6	2,47	-2,47
7	-2,47	-2,47
8	0,00	-0,70

You can find the assembly instruction on the next page.

Technical data

General features

Connector Design	male panel mount connector
Connector locking system	bolted
Termination	crimp
Wire gauge (mm)	0,75 mm ²
Wire gauge (AWG)	20
Upper temperature	95 °C
Lower temperature	-40 °C

Electrical parameters

Rated voltage	60 V
Rated impulse voltage	500 V
Pollution degree	1
Overvoltage category	I
Material group	III
Rated current (40°C)	5 A
Volume resistivity	≤ 5 mΩ
Degree of protection	IP67
Mechanical operation	> 500 Mating cycles

Material

Material of contact	CuZn (Messing)
Contact plating	Ag (silver)
Material of contact body	PBT (UL 94 V-0)

Product **Contacts: 8 DIN, Male panel mount connector, rectangular flange, crimp**

Area **M16 IP67 Series 423/ 723/ 425**
Article number **09 0173 370 08**

Installation instructions / Mounting cutout

