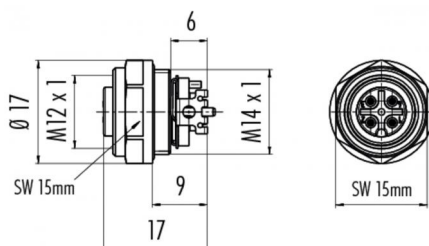


Product **Female panel mount connector SMT, with housing, shieldable**  
 Area **M12-D, M12-X Series 825/876 D-coding**  
 Article number **99 3732 402 04**

### Illustration



### Scale drawing



## Technical data

### General features

Connector Design	female panel mount connector
Termination	SMT
Upper temperature	-40 °C
Lower temperature	85 °C

### Electrical parameters

Rated voltage	250 V
Rated impulse voltage	2500 V
Rated current (40°C)	4A
EMV compliance	shieldable

### Material

Material of contact	CuZn(Messing)
Contact plating	Au (gold)
Material of contact body	LCP