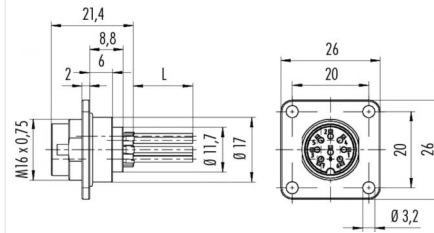


Product **Contacts: 8 DIN, Male panel mount connector, rectangular flange, with single wires**
 Area **M16 IP67 Series 423/ 723/ 425**
 Article number **09 0173 320 08**

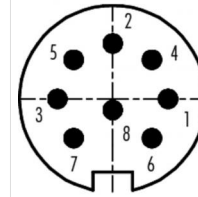
Illustration



Scale drawing



Contact Arrangement



| | X | Y |
|---|-------|-------|
| 1 | 3,50 | 0,00 |
| 2 | 0,00 | 3,50 |
| 3 | -3,50 | 0,00 |
| 4 | 2,47 | 2,47 |
| 5 | -2,47 | 2,47 |
| 6 | 2,47 | -2,47 |
| 7 | -2,47 | -2,47 |
| 8 | 0,00 | -0,70 |

You can find the assembly instruction on the next page.

Technical data

General features

Connector Design male panel mount connector
 Connector locking system bolted
 Termination Strands
 Wire gauge (mm) 0,75 mm²
 Wire gauge (AWG) 22
 Upper temperature 85 °C
 Lower temperature -30 °C

Electrical parameters

Rated voltage 100 V
 Rated impulse voltage 1200 V
 Pollution degree 1
 Overvoltage category I
 Material group II
 Rated current (40°C) 5 A
 Volume resistivity ≤ 5 mΩ
 Degree of protection IP67
 Mechanical operation > 500 Mating cycles

Material

Material of contact CuSn (Bronze)
 Contact plating Ag (silver)
 Material of contact body PBT (UL 94 V-0)

| | |
|----------------|--|
| Product | Contacts: 8 DIN, Male panel mount connector, rectangular flange, with single wires |
| Area | M16 IP67 Series 423/ 723/ 425 |
| Article number | 09 0173 320 08 |

Installation instructions / Mounting cutout

