

Product **Contacts: 4, Male panel mount connector with single wires, 0.25 mm², contact insert, yellow, M16 x 1.5**
 Area **M12-A Series 713/763**
 Article number **76 0231 0011 00304 0200**

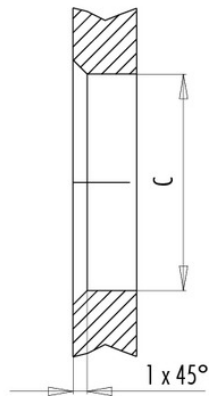
Installation instructions / Mounting cutout

Mit Fläche als Verdrehschutz
With flats as anti-rotation device

PG 9/M16 x 1,5



Mit Durchgangsbohrung
With bore hole



Mit Gewinde, einschraubbar
With thread to screw in



alternativ/alternativ

| | A | B | C |
|---------|---------|------|------|
| PG 9 | PG 9 | 16,2 | 15,3 |
| PG 13,5 | PG 13,5 | 21,5 | 20,5 |
| M16x1,5 | M16x1,5 | 17,0 | 16,1 |
| M20x1,5 | M20x1,5 | 21,0 | 20,1 |

Anzugsdrehmoment/Tightening moment

Metallgehäuse/Metal housing 6,25 Nm
 Kunststoffgehäuse/Plastic housing 3,75 Nm