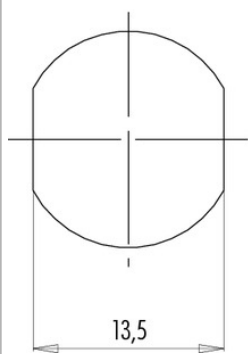


Product **Contacts: 3+PE, Female panel mount connector, power, S-coding, with single wires, fixing thread M16 x 1.5**

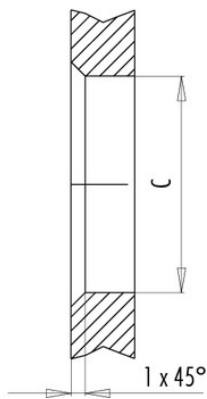
Area **M12-S Series 814**
 Article number **09 0692 700 04**

Installation instructions / Mounting cutout

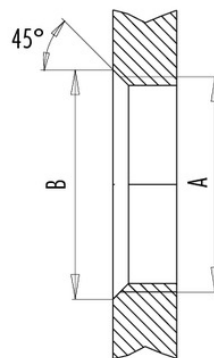
Mit Fläche als Verdrehenschutz
 With flats as anti-rotation device



Mit Durchgangsbohrung
 With bore hole



Mit Gewinde, einschraubbar
 With thread to screw in



alternativ/alternativ

	A	B	C
PG 9	PG 9	16,2	15,3
M16x1,5	M16x1,5	17,0	16,1

Anzugsdrehmoment/Tightening moment

Metallgehäuse/Metal housing 6,25 Nm
 Kunststoffgehäuse/Plastic housing 3,75 Nm