

Product **Contacts: 5, Female panel mount connector with single wires, 0.25 mm<sup>2</sup>, contact insert, blue, M16 x 1.5**  
 Area **M12-A Series 713/763**  
 Article number **76 0232 0011 00605 0200**

Illustration	Scale drawing	Contact Arrangement																		
	<p>Ausführung mit Zink Druckgussgehäuse Version with zinc diecasted housing</p>	<table border="1" style="margin: 10px auto;"> <thead> <tr> <th></th> <th>X</th> <th>Y</th> </tr> </thead> <tbody> <tr> <td>1</td> <td>-2,50</td> <td>0,00</td> </tr> <tr> <td>2</td> <td>0,00</td> <td>2,50</td> </tr> <tr> <td>3</td> <td>2,50</td> <td>0,00</td> </tr> <tr> <td>4</td> <td>0,00</td> <td>-2,50</td> </tr> <tr> <td>5</td> <td>0,00</td> <td>0,00</td> </tr> </tbody> </table> <p>1 braun/brown                  2 weiß/white                  3 blau/blue                  4 schwarz/black                  5 grau/grey</p> <p>Geschirmte Versionen: Schirm auf Gehäuse                  Shielded versions: shield on housing</p>		X	Y	1	-2,50	0,00	2	0,00	2,50	3	2,50	0,00	4	0,00	-2,50	5	0,00	0,00
	X	Y																		
1	-2,50	0,00																		
2	0,00	2,50																		
3	2,50	0,00																		
4	0,00	-2,50																		
5	0,00	0,00																		

**You can find the assembly instruction on the next page.**

## Technical data

### General features

Connector Design female panel mount connector  
 Connector locking system bolted  
 Termination Strands UL 1007/1569  
 Wire gauge (mm) 0,25 mm<sup>2</sup>  
 Wire gauge (AWG) 24  
 Upper temperature 85 °C  
 Lower temperature -40 °C

### Cable data

Approval 1 UL

### Electrical parameters

Rated voltage 125 V  
 Rated impulse voltage 1500 V  
 Pollution degree 3  
 Overvoltage category II  
 Material group II  
 Rated current (40°C) 4 A  
 Volume resistivity ≤ 3 mΩ  
 EMV compliance not shielded  
 Degree of protection IP67  
 Mechanical operation > 50 Mating cycles

### Material

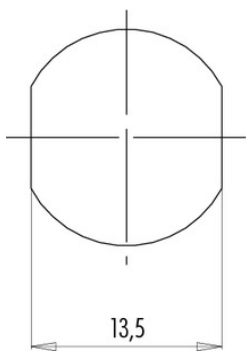
Material of contact CuSn (Bronze)  
 Contact plating Au (gold)  
 Material of contact body PA  
 Material of housing Zink Druckguss vernickelt

Product **Contacts: 5, Female panel mount connector with single wires, 0.25 mm<sup>2</sup>, contact insert, blue, M16 x 1.5**  
 Area **M12-A Series 713/763**  
 Article number **76 0232 0011 00605 0200**

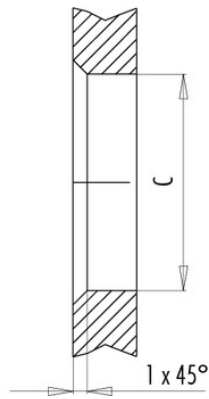
**Installation instructions / Mounting cutout**

Mit Fläche als Verdrehschutz  
With flats as anti-rotation device

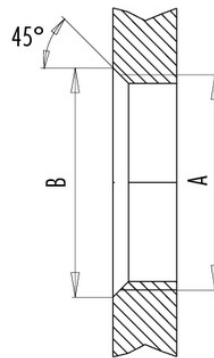
PG 9/M16 x 1,5



Mit Durchgangsbohrung  
With bore hole



Mit Gewinde, einschraubbar  
With thread to screw in



alternativ/alternativ

	A	B	C
PG 9	PG 9	16,2	15,3
PG 13,5	PG 13,5	21,5	20,5
M16x1,5	M16x1,5	17,0	16,1
M20x1,5	M20x1,5	21,0	20,1

Anzugsdrehmoment/Tightening moment

Metallgehäuse/Metal housing 6,25 Nm  
 Kunststoffgehäuse/Plastic housing 3,75 Nm