

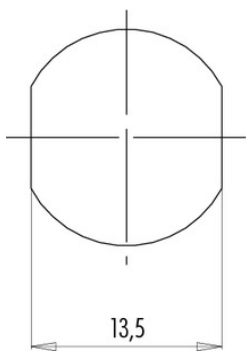


Product **Contacts: 4, Female panel mount connector with single wires, 0.25 mm<sup>2</sup>, contact insert, yellow, M16 x 1.5**  
 Area **M12-A Series 713/763**  
 Article number **76 0232 0011 00304 0200**

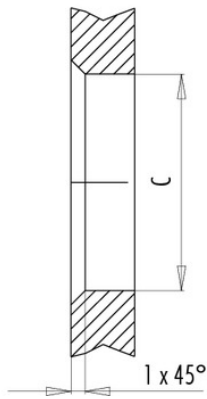
**Installation instructions / Mounting cutout**

Mit Fläche als Verdrehschutz  
With flats as anti-rotation device

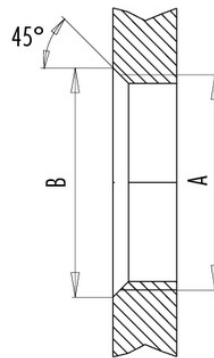
PG 9/M16 x 1,5



Mit Durchgangsbohrung  
With bore hole



Mit Gewinde, einschraubbar  
With thread to screw in



alternativ/alternativ

|         | A       | B    | C    |
|---------|---------|------|------|
| PG 9    | PG 9    | 16,2 | 15,3 |
| PG 13,5 | PG 13,5 | 21,5 | 20,5 |
| M16x1,5 | M16x1,5 | 17,0 | 16,1 |
| M20x1,5 | M20x1,5 | 21,0 | 20,1 |

Anzugsdrehmoment/Tightening moment

Metallgehäuse/Metal housing 6,25 Nm  
 Kunststoffgehäuse/Plastic housing 3,75 Nm